

Capt James Slover

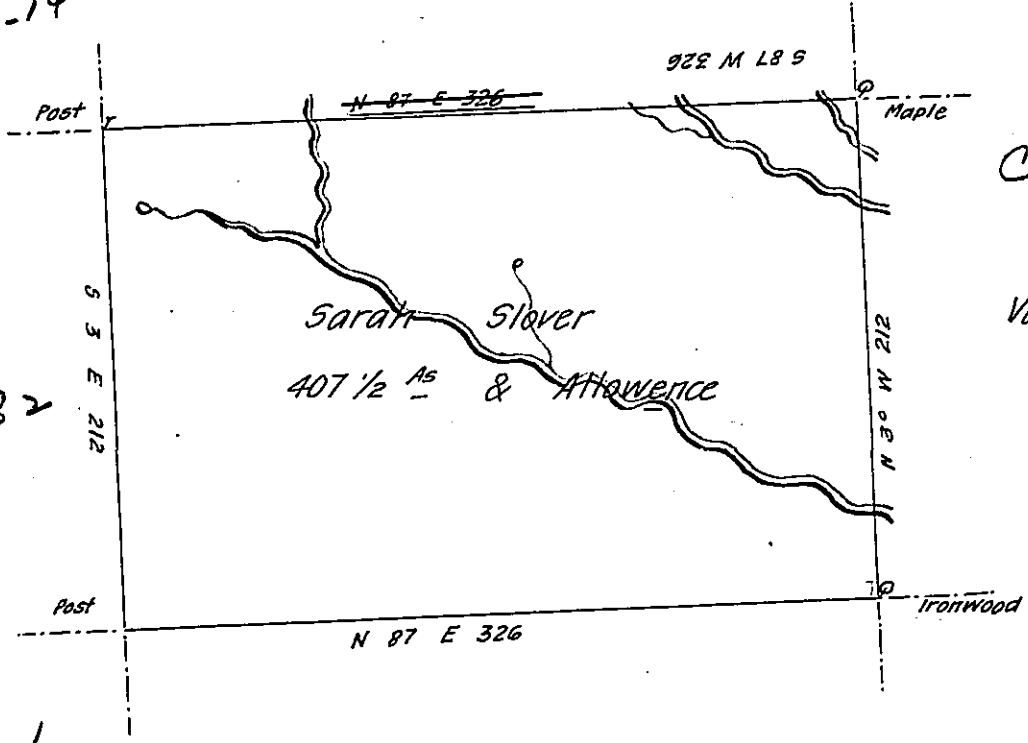
C-134-13-14

John Nicholson

Page-81-82

C-20-190

Vacant



C-20-54

Josep- Suhler
A. 51-58

A draught of a Tract of Land Called— situate on a Northerly Branch
of Tunkhannock Creek joining land of James Slover in Stoke Township Northumb^r
County Containing Four hundred & Seven Acres 1/2 & Allow^{ce} of Six P. Cent for Roads
&c. Surveyed the 5th day of Sept for Sarah Slover in pursuance of a warrant
dated the 22nd day of February 1785 by

W^m Gray D.S.

To John Lukens Esq^r

Surv^r Gen^l

IN TESTIMONY that the above is a copy of the original remaining on file in
the Department of Internal Affairs of Pennsylvania, made
conformably to an Act of Assembly approved the 16th day of
February, 1833, I have hereunto set my Hand and caused
the Seal of said Department to be affixed at Harrisburg,
this.....twelfth.....day of.....December.....1906

Loach P. Brown
Secretary of Internal Affairs.